

I. INTRODUCTION

1.1 Description of the Host Institution

Indonesia International Institute for Life-Sciences (i3L) is a life science higher education institute located in Jakarta, Indonesia. There are six undergraduate programs offered at i3L, which are Bioinformatics, Biomedicine, Biotechnology, Food Science and Nutrition, Food Technology and Pharmacy. Established in 2013 by the Indonesia Scientia International Foundation, i3L's vision is to become a leading interdisciplinary higher education institution that is globally connected and directly impacts the society through science and innovation. To achieve this vision, i3L aims to provide an integrative learning environment to shape a new generation of Indonesian scientists that are ready to compete globally. Indonesia International Institute for Life Sciences always strives to achieve its vision and mission by offering its top-quality faculty, state-of-the-art facilities and global collaborations with academics, industries and governments.

In line with the vision and mission, this institution formed a Research and Community Department wherein i3L has encouraged the lecturers, academics and students at the institution to engage in research and community services, on an individual, group, or among lecturers basis. i3L has also offered internship opportunities nationally and globally. In this report, an internship activity on a collaborative project between i3L and Badan Riset dan Inovasi Nasional (BRIN) as the main and largest national research and innovation body in Indonesia is reported. This collaboration project aims to evaluate the anticancer activity of *Marchantia paleacea* and *Pogonatum neesii*. To expedite the activity, the internship was conducted with four interns and supervised by respective lecturers. The organizational structure is illustrated in Fig 1. below.

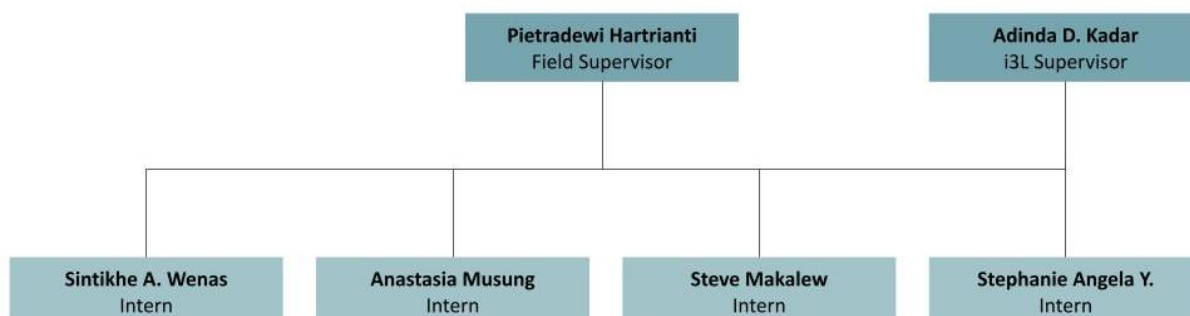


Figure 1. Organizational structure

1.2 Description of the Department

The general internship aim was to conduct the project of the Department of Pharmacy with the faculty, apt. Pietradewi Hatrianti, S. Farm, M. Farm, Ph.D., as the supervisor. Pharmacy Department in i3L focuses mainly on drug discovery, development, clinical trial, drug delivery and management as well as patient counseling. The Department of Pharmacy is closely related to the field of Biomedicine and Medical Biotechnology as it studies the biomedical science, chemistry, pharmacology, pharmaceutical engineering and population health.